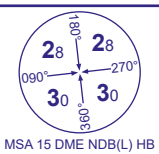
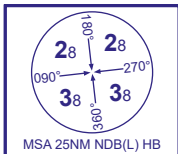
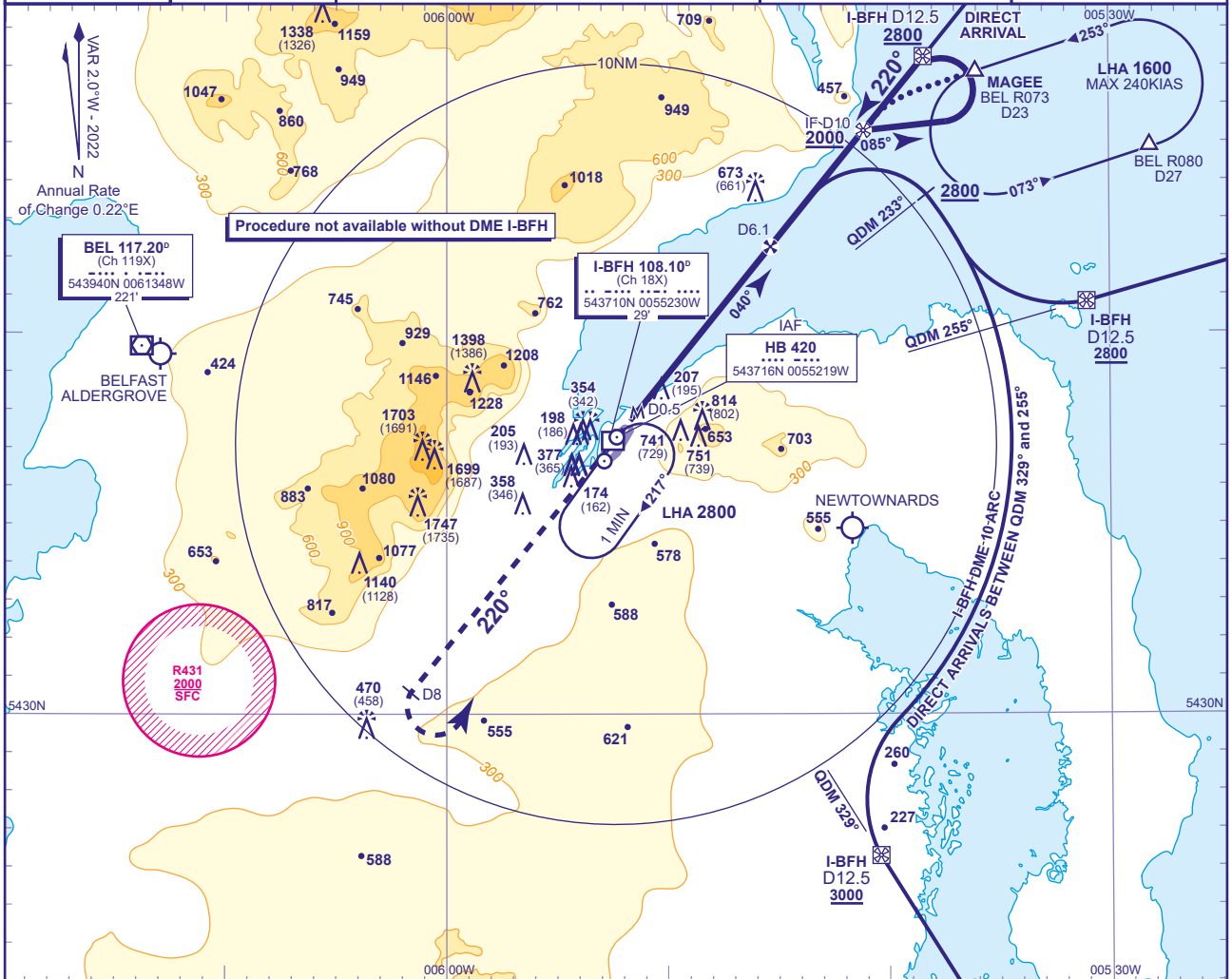


INSTRUMENT APPROACH - ICAO

BELFAST CITY
NDB(L)/DME
RWY 22
(ACFT CAT A,B,C)

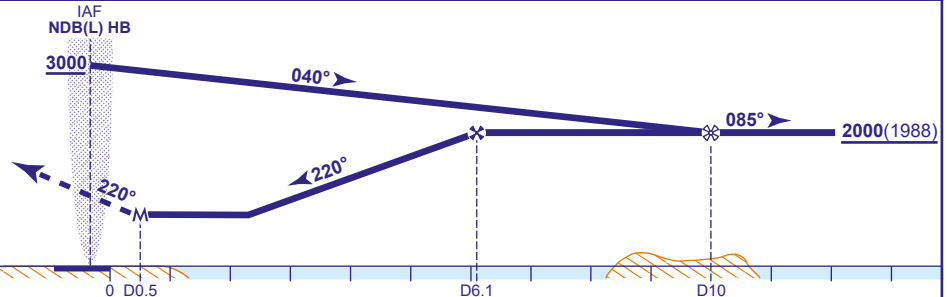
APP 130.850	BELFAST APPROACH	AD ELEVATION 15
TWR 122.830	BELFAST TOWER	THR ELEVATION 12
RAD 134.800	BELFAST RADAR	OBSTACLE ELEVATION 1744 AMSL (1732) (ABOVE THR)
ATIS 124.580	BELFAST INFORMATION	BEARINGS ARE MAGNETIC

TRANSITION ALTITUDE
6000

RECOMMENDED PROFILE GRADIENT 5.24%, 320FT/NM

DME I-BFH	6	5	4	3
ALT(HGT)	1990(1978)	1670(1658)	1350(1338)	1030(1018)

MAPt I-BFH DME 0.5
Climb straight ahead on QDR 220° to 3000 or I-BFH DME 8 whichever is the earlier then turn left to return to NDB(L) HB to enter the hold at 3000 or as directed.



Aircraft Category	A	B	C	Rate of descent	G/S KT	160	140	120	100	80
OCA (OCH)	Procedure	810(798)	810(798)	810(798)	FT/MIN	850	740	640	530	420
VM(C)OCA (OCH AAL)	Total Area	1040(1025)	1120(1105)	1800(1785)						
	Southeast of RWY 04/22	1040(1025)	1120(1105)	1230(1215)						

NOTE 1 FAT offset 3° from RWY C/L.
2 Direct Arrivals available on request to ATC.

CHANGE (10/23): BEL VOR/DME ELEVATION REVISED.